

## BEYAZ PARK TOPKAPI

TURKEY / ISTANBUL / FATIH

**Project Status:**  
Completed

**Price Range:**  
561,314 - 561,314 \$



**New | For Investment | Appropriate for Credit |**

**Investment Properties | Distressed Properties | Luxury Property |**

## **LOCATION :**

**Near to Street, Near to E5 Highway, Close to Subway, Close to bus terminal, Close to Minibus Route, Close to Metrobus Transportation, Close to Eurasia Tunnel, Close to the tram, Close to City Center,**

## **ENVIRONMENT :**

**Shopping Center, Bank, Gas Station, Drugstore, Drugstore / Medical, Entertainment Center, Hospital / Health facility, Nursery, Coiffure & Beauty Center, High School, School (Education facility), Patisserie & Bakery, Polyclinic, Police Station, Post Office, Restaurant, Health Center, District Bazaar, Veterinary, Dry-Cleaning, Movie Theater,**

## **INFRASTRUCTURE :**

**Earthquake Regulation Proof, Earthquake Resistant, Ground Survey,**

## **COMPOUND :**

**Security, Pressure Tank, Intercom, Generator-Power Unit, Doorman, Parking - Indoor, Carry Lift/Elevator, Security System, Suitable for Disabled, Fire Alarm, Security Camera,**

## **CONSTRUCTION PROPERTIES :**

**Built-in White Goods Kitchen, Heat Proofing, Sheathing, Fire ladder, Reinforced Concrete,**

## **SCENERY :**

**City View,**

## **FACILITY ACTIVITIES :**

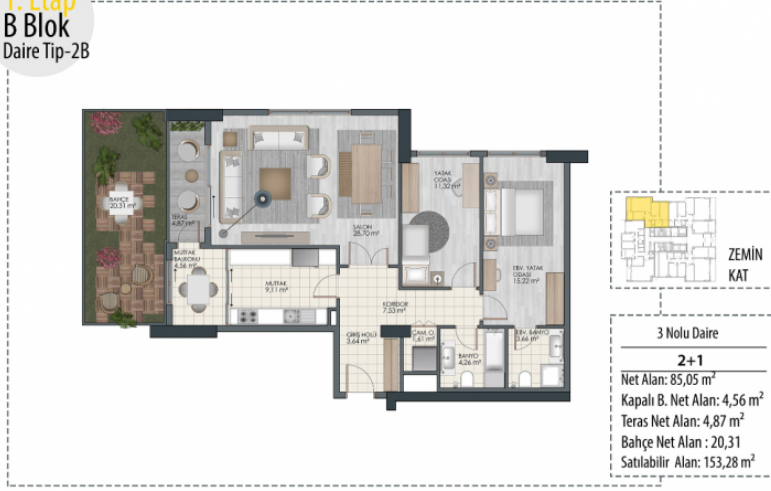
**Children Swimming Pool, Fitness Center, Social Facility, Gym, Swimming Pool, Turkish Hammam, SPA,**

## **Product Documents**

**[CATALOGUE.pdf](#) |**

## ESTATE TYPES

1. Etap  
B Blok  
Daire Tip-2B



561,314 \$

125 m<sup>2</sup> , 2 + 1

For Sale, Apartment



