

BAŞAKŞEHİR AVRASYA - 2+1 APARTMENT / RESIDENCE Istanbul / Başakşehir

For Sale - Apartment 8,320,000 TL | 117 m2 Istanbul / Başakşehir



Rooms : 2
Saloons : 1
Baths : 1
Type of Property : Apartment Flat
Property Condition : Brand New
Usage Status : Empty
Heating Type : Natural Gas
Property Direction : West
North
South
East
Toilet Number : 1
Available to Bank Credit : Yes
Barter : No
Hand Over : No



İsmail Can

Phone +90 542-811 80 80

Mobile Phone +90 542-811
80 80



REALTY GALAXY

Phone +90 542-811 80 80

Mobile Phone +90 533-382
39 79

Fax +90 212-855 74 75

Yavuz Sultan Selim Bulvarı

Büyükkçekmece /

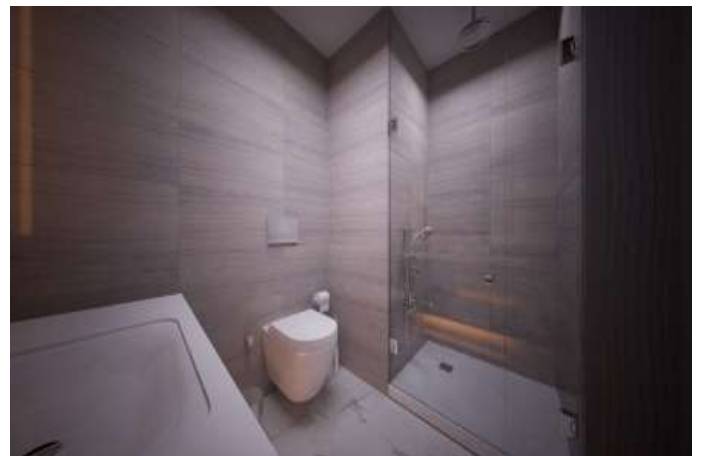
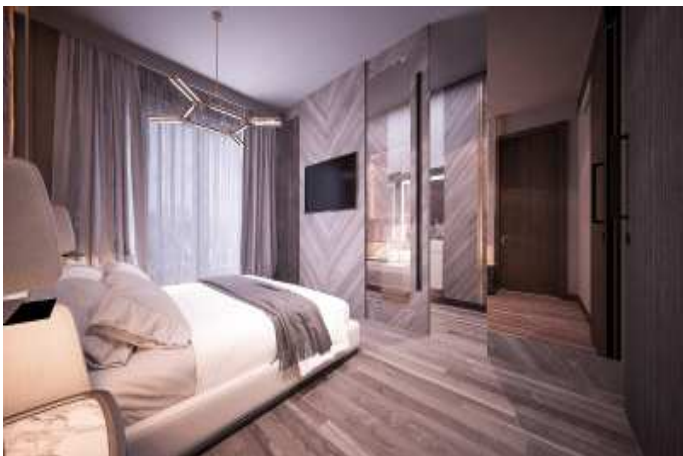
Büyükkçekmece

34528 , Istanbul

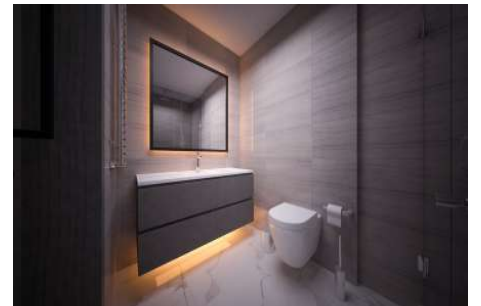
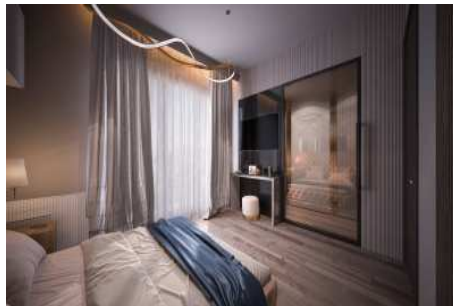
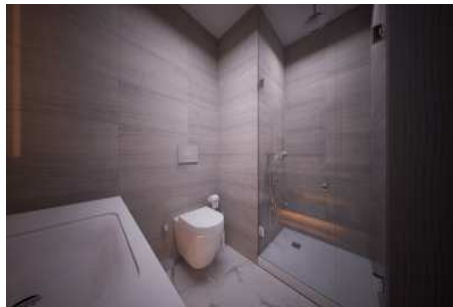
Advert No:f-494589-901

- * Building : Elevator / Lift, Generator-Power Unit, Doorman, Water tank, Fire ladder, Ground Survey, Parking, Fire Alarm,
- * Environment : Shopping Center, Kindergarten, ATM, Bank, Municipality, Gas Station, Cafe, Drugstore, Drugstore / Medical, Entertainment Center, Elementary School, Firefighting, Cafeteria, Nursery, Coiffure & Beauty Center, High School, Market, Game Park, Park, Police Station, Post Office, Restaurant, Health Center, District Bazaar, University, Veterinary, School,
- * Compound : Fitness Center, Security, Parking - Indoor, Social Facility, Security Camera,
- * Location : Near the Sea, Close to Airport, City View, Near to Highway, Close to Minibus Route, Close to TEM,

Advert No:f-494589-901



Advert No:f-494589-901

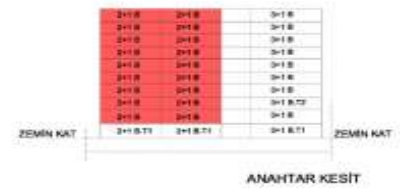


Advert No:f-494589-901

2+1 B

GİRİŞ HOLLÜ	7.47 m ²
SALON	22.60 m ²
MUTFAK	10.64 m ²
YATAK ODASI	9.94 m ²
E.YATAK ODASI	16.77 m ²
E.BANYO	4.32 m ²
BANYO	4.16 m ²
HOL	4.56 m ²
ÇAMAŞIR ODASI	0.88 m ²
BALKON	4.93 m ²

NET ALAN	81.53 m ²
NET ALAN(balkon dahil)	86.46 m ²
BRÜT ALAN	97.00 m ²
SATILABİLİR ALAN	117.91 m ²
DEPO	3.00 m ²



2+1 E.T1

SİREK HOLLÜ	6.27 m ²
SALON	22.37 m ²
MUTFAK	10.64 m ²
E.YATAK ODASI	16.77 m ²
E.BANYO	4.32 m ²
BANYO	4.16 m ²
HOL	4.56 m ²
ÇAMAŞIR ODASI	0.88 m ²
BALKON	4.93 m ²



1+1 B.T

SİREK HOLLÜ	6.27 m ²
SALON	22.37 m ²
MUTFAK	10.64 m ²
E.YATAK ODASI	16.77 m ²
E.BANYO	4.32 m ²
BANYO	4.16 m ²
HOL	4.56 m ²
ÇAMAŞIR ODASI	0.88 m ²
BALKON	4.93 m ²



2+1 D

SİREK HOLLÜ	6.27 m ²
SALON	22.37 m ²
MUTFAK	10.64 m ²
E.YATAK ODASI	16.77 m ²
E.BANYO	4.32 m ²
BANYO	4.16 m ²
HOL	4.56 m ²
ÇAMAŞIR ODASI	0.88 m ²
BALKON	4.93 m ²



1+1 A

SİREK HOLLÜ	6.27 m ²
SALON	22.37 m ²
MUTFAK	10.64 m ²
E.YATAK ODASI	16.77 m ²
E.BANYO	4.32 m ²
BANYO	4.16 m ²
HOL	4.56 m ²
ÇAMAŞIR ODASI	0.88 m ²
BALKON	4.93 m ²

